

Thank you for your comment, Robert Bendick.

The comment tracking number that has been assigned to your comment is SolarM60262.

Comment Date: September 14, 2009 19:47:25PM
Solar Energy Development PEIS
Comment ID: SolarM60262

First Name: Robert
Middle Initial:
Last Name: Bendick
Organization: The Nature Conservancy
Address: 4245 Fairfax Drive
Address 2:
Address 3:
City: Arlington
State: VA
Zip: 22203
Country: USA
Email: rbendick@tnc.org
Privacy Preference: Don't withhold name or address from public record
Attachment: 2.Att.2b_San_Luis_Valley[1].ppt

Comment Submitted:

Attachment 2b. Maps of observed intersections between BLM Solar Energy Study Areas and natural resource values.

These maps include the following:

- A. Bald eagle winter forage: Intersects Antonito Southeast
- B. Elk highway crossing: Intersects Fourmile East
- C. Elk severe winter range: Intersects DeTilla Gulch, Los Mogotes East, and Antonito Southeast
- D. Gunnison's prairie dog colonies (active and unknown): Intersect DeTilla Gulch, Fourmile East, and Los Mogotes East
- E. Pronghorn winter concentration areas: Intersect DeTilla Gulch and Los Mogotes East
- F(1). Landscape intactness: San Luis Valley
- F(2). Landscape intactness: DeTilla Gulch
- F(3). Landscape Intactness: Fourmile East
- F(4). Landscape Intactness: Los Mogotes East
- F(5). Landscape Intactness: Antonito Southeast

Intersections observed but not included in this attachment include:

- Sandhill crane habitat - no GIS layer available - hard copy map only)
- Riparian areas – evident in Attachment 1.
- TNC portfolio sites -

Common map elements:



BLM



Solar Energy Study Areas

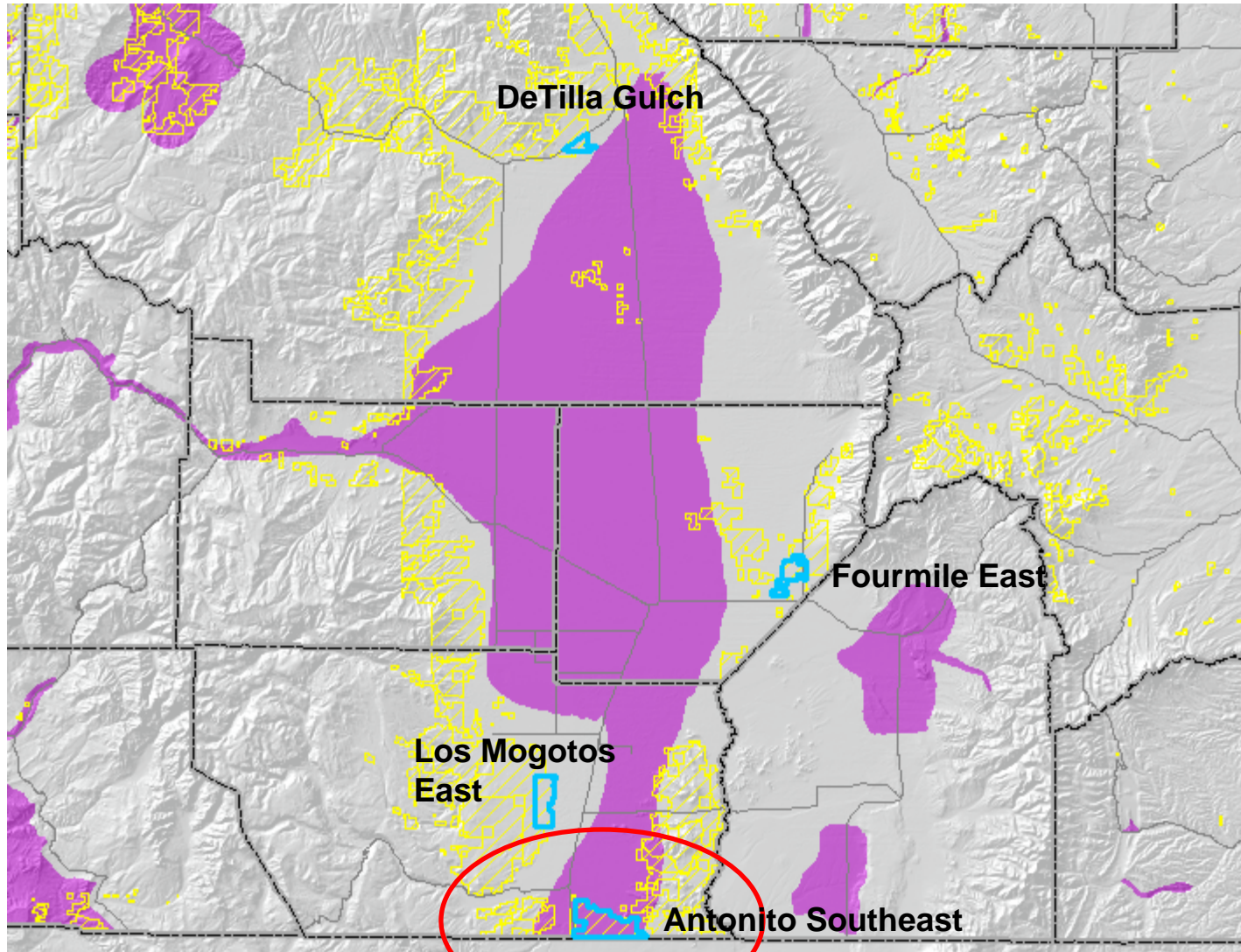


Roads



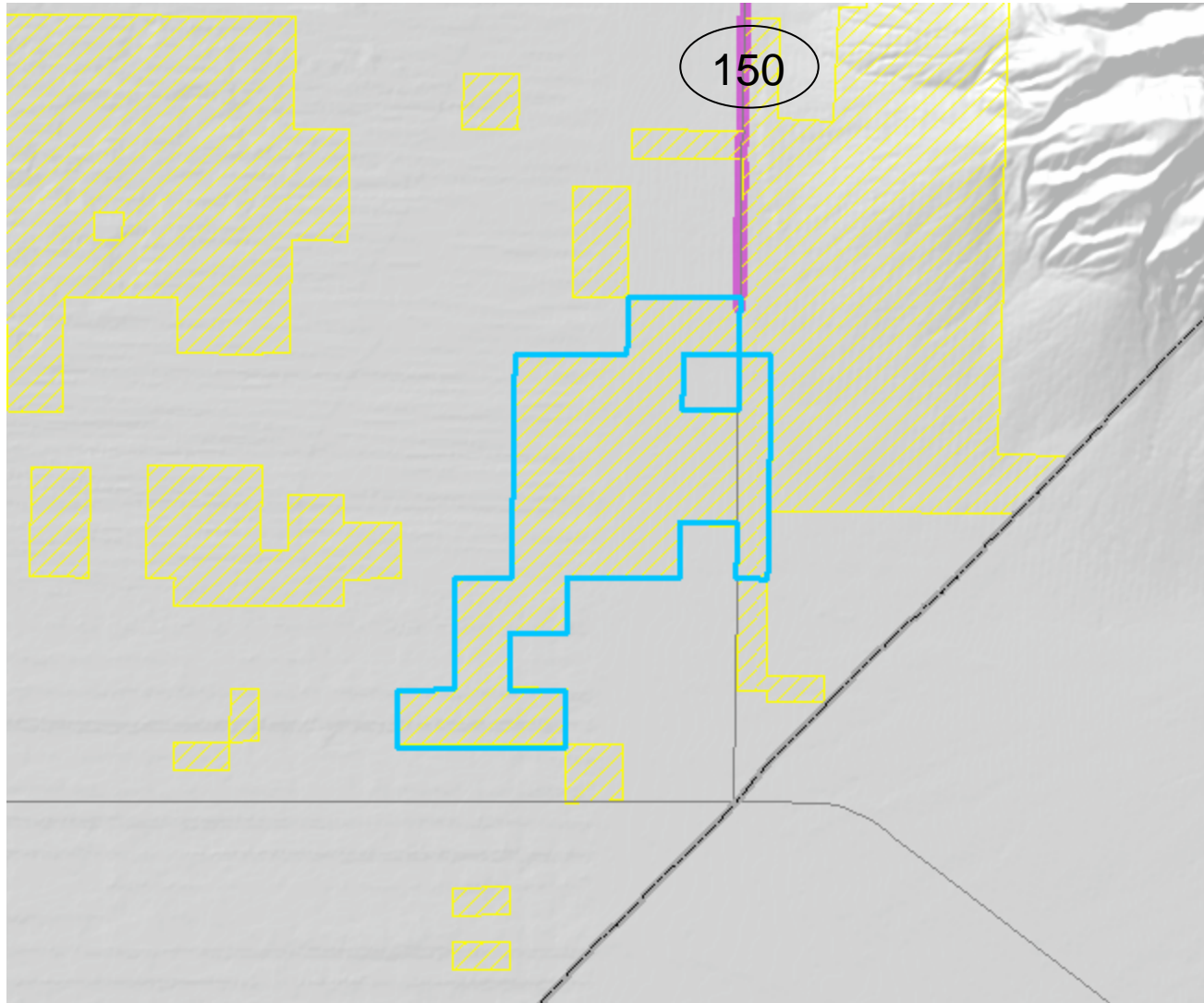
Counties

A. Bald eagle winter forage: Intersects Antonito Southeast



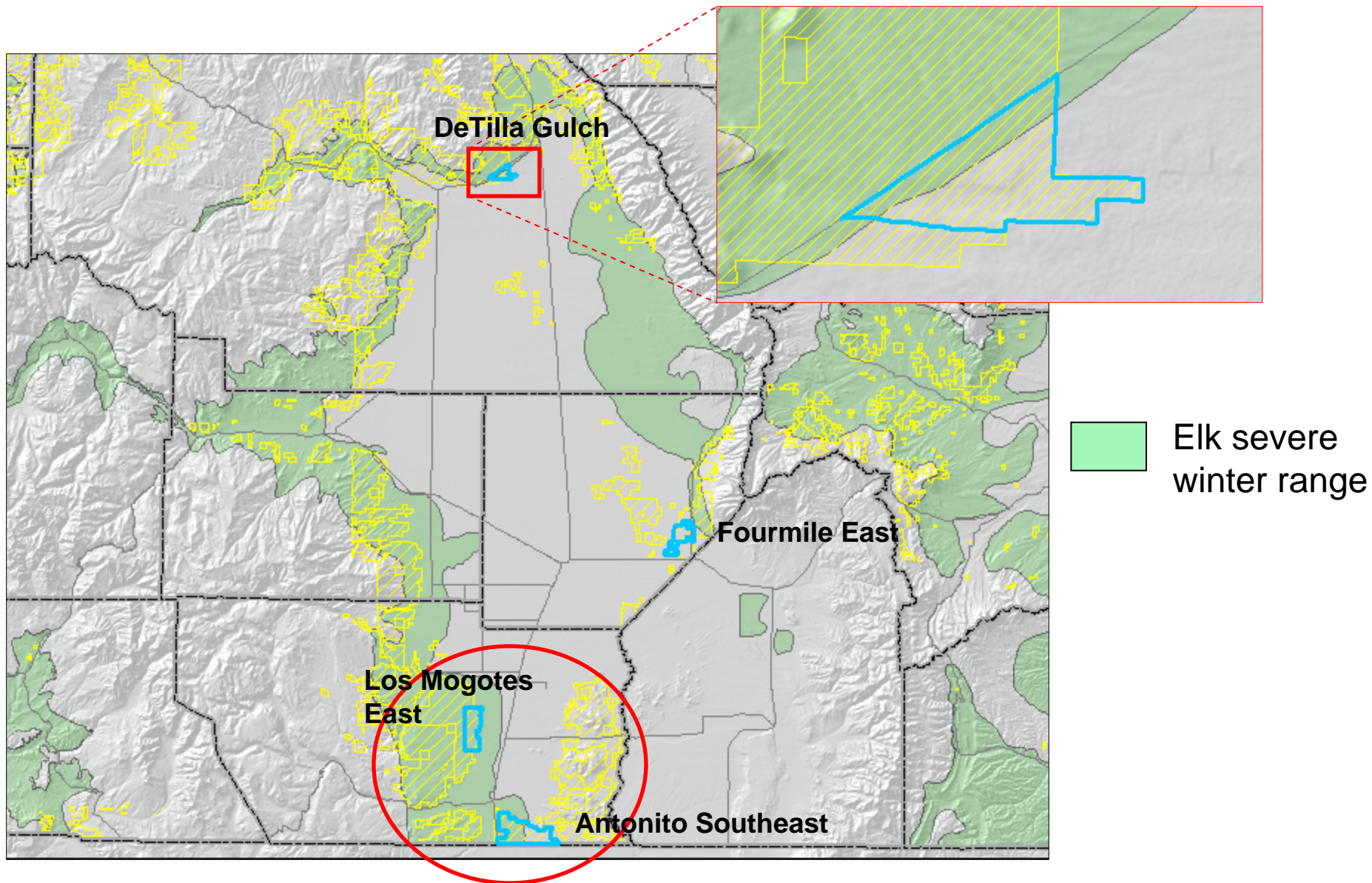
 Bald eagle winter forage

B. Elk highway crossing: Intersects Fourmile East

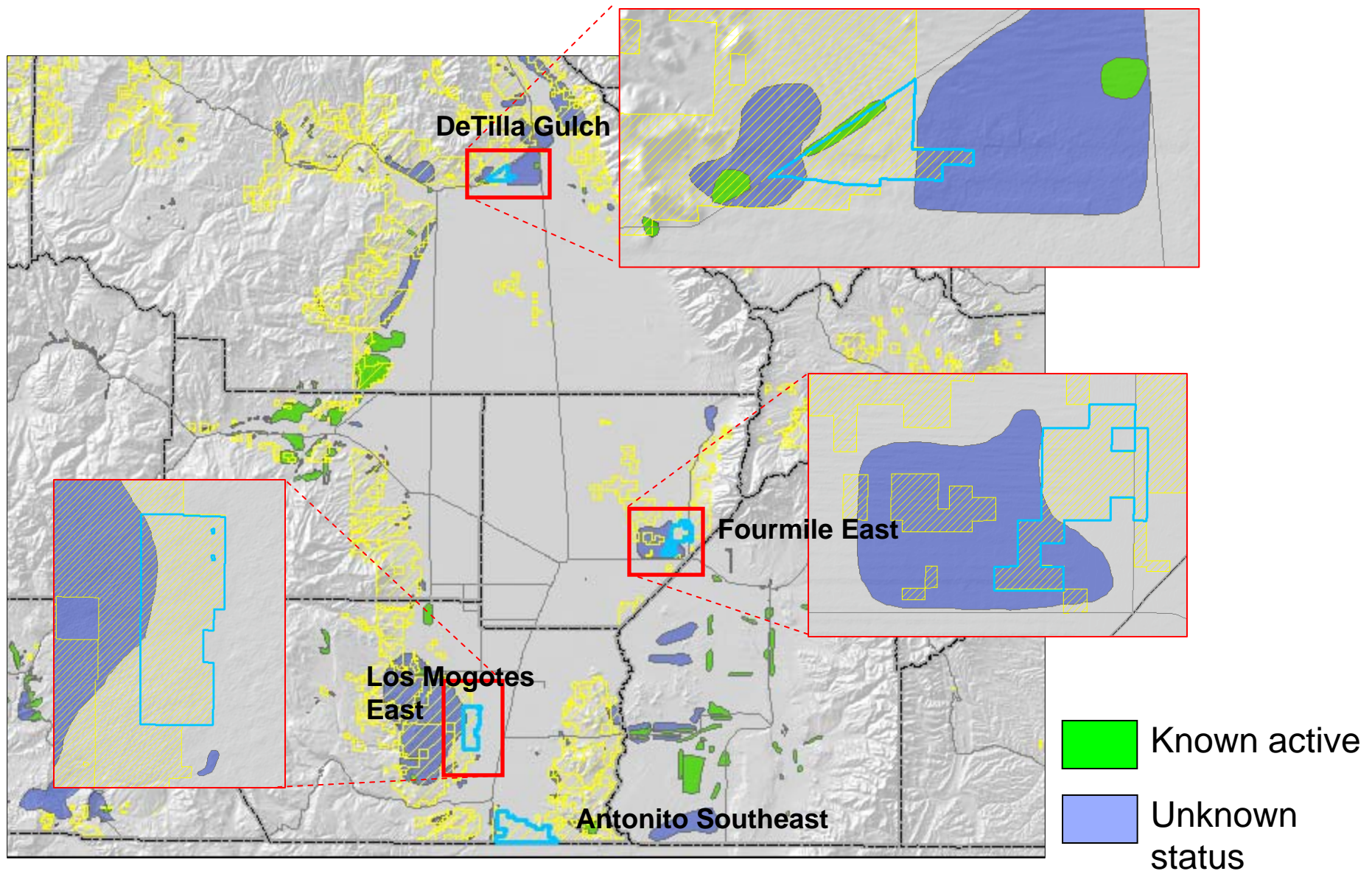


Elk highway crossing

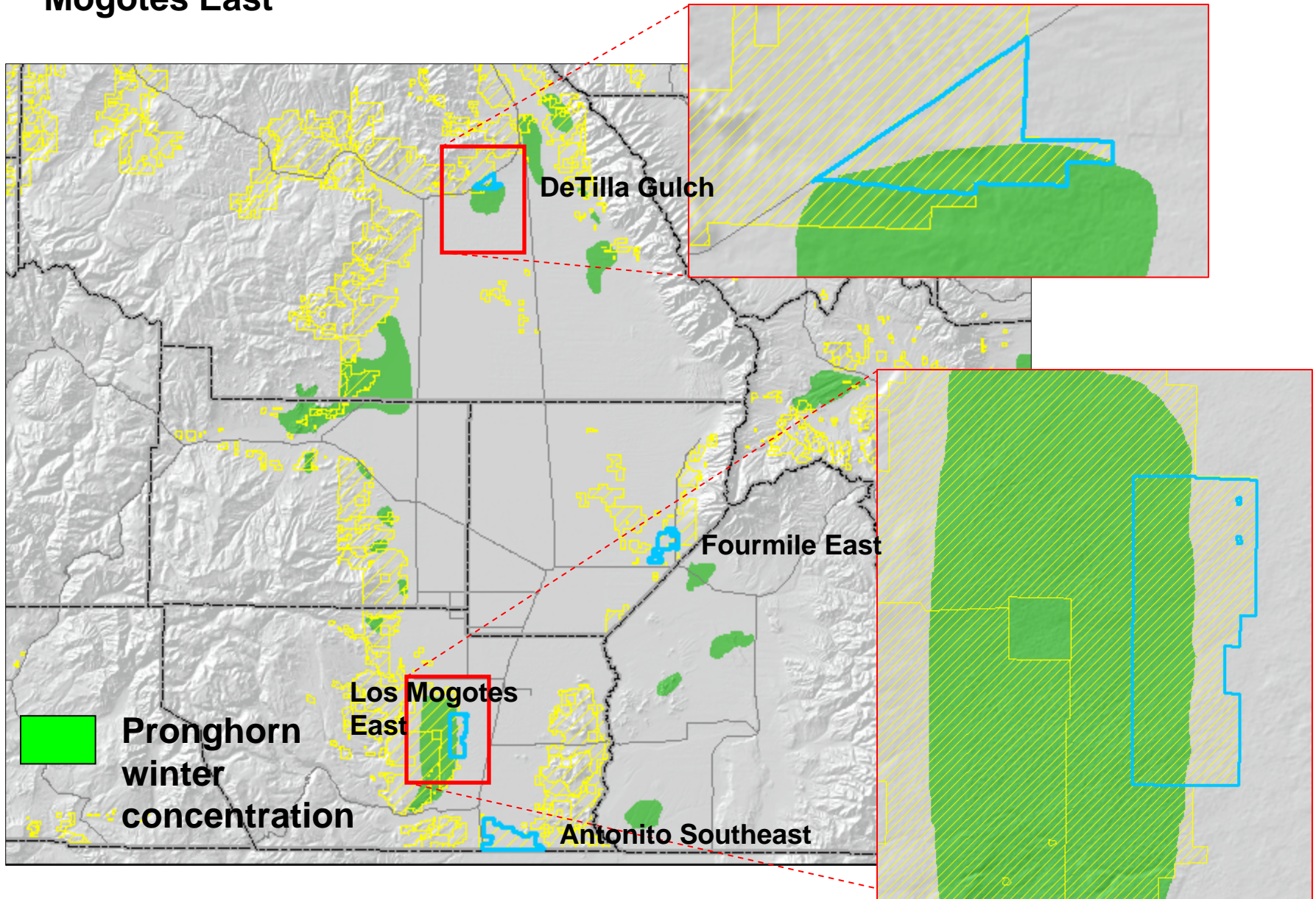
C. Elk severe winter range: Intersects DeTilla Gulch, Los Mogotes East, and Antonito Southeast



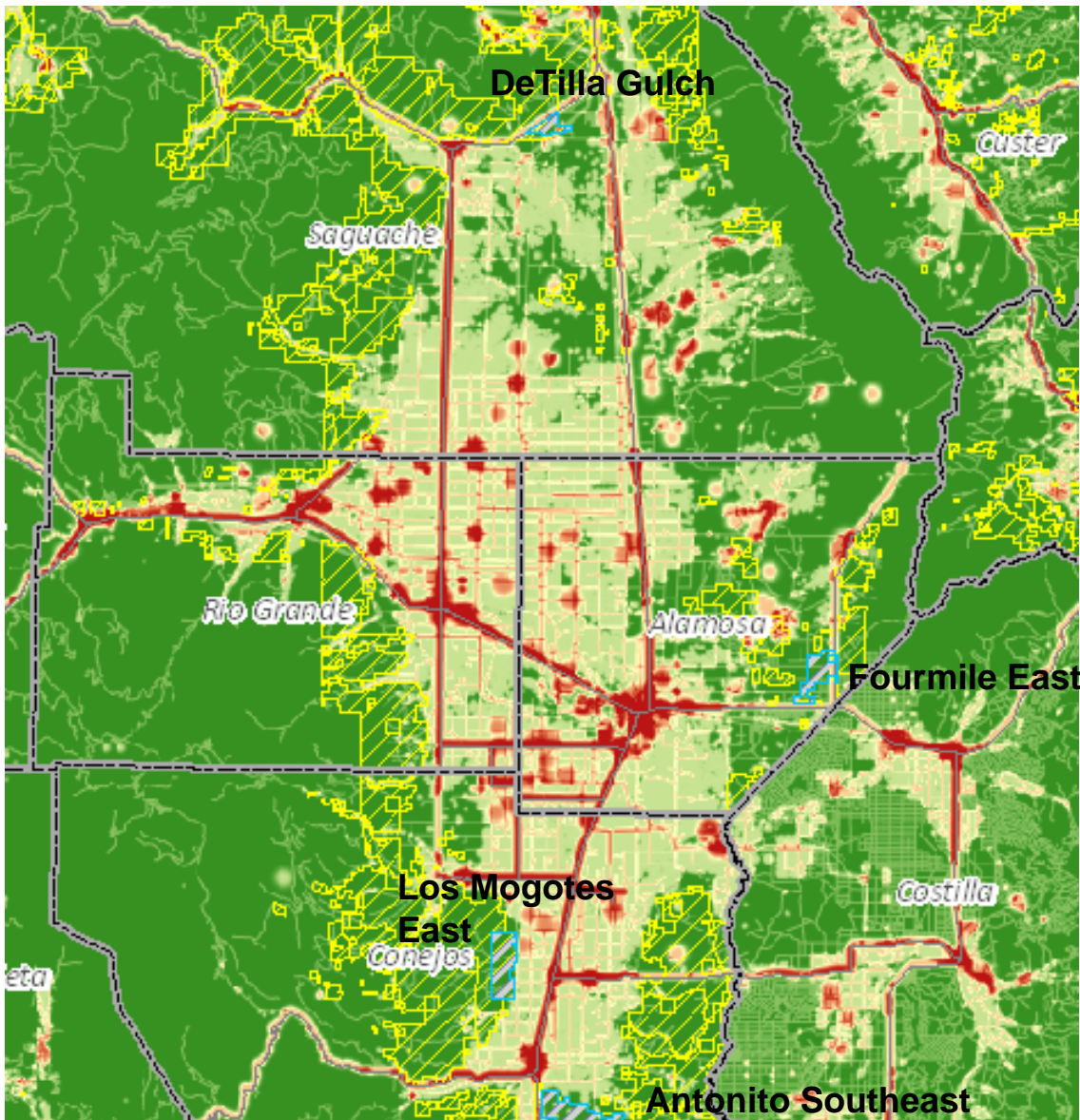
D. Gunnison's prairie dog colonies (active and unknown): Intersect DeTilla Gulch, Fourmile East, and Los Mogotes East



E. Pronghorn winter concentration areas: Intersect DeTilla Gulch and Los Mogotes East



F(1). Landscape intactness: San Luis Valley



More intact

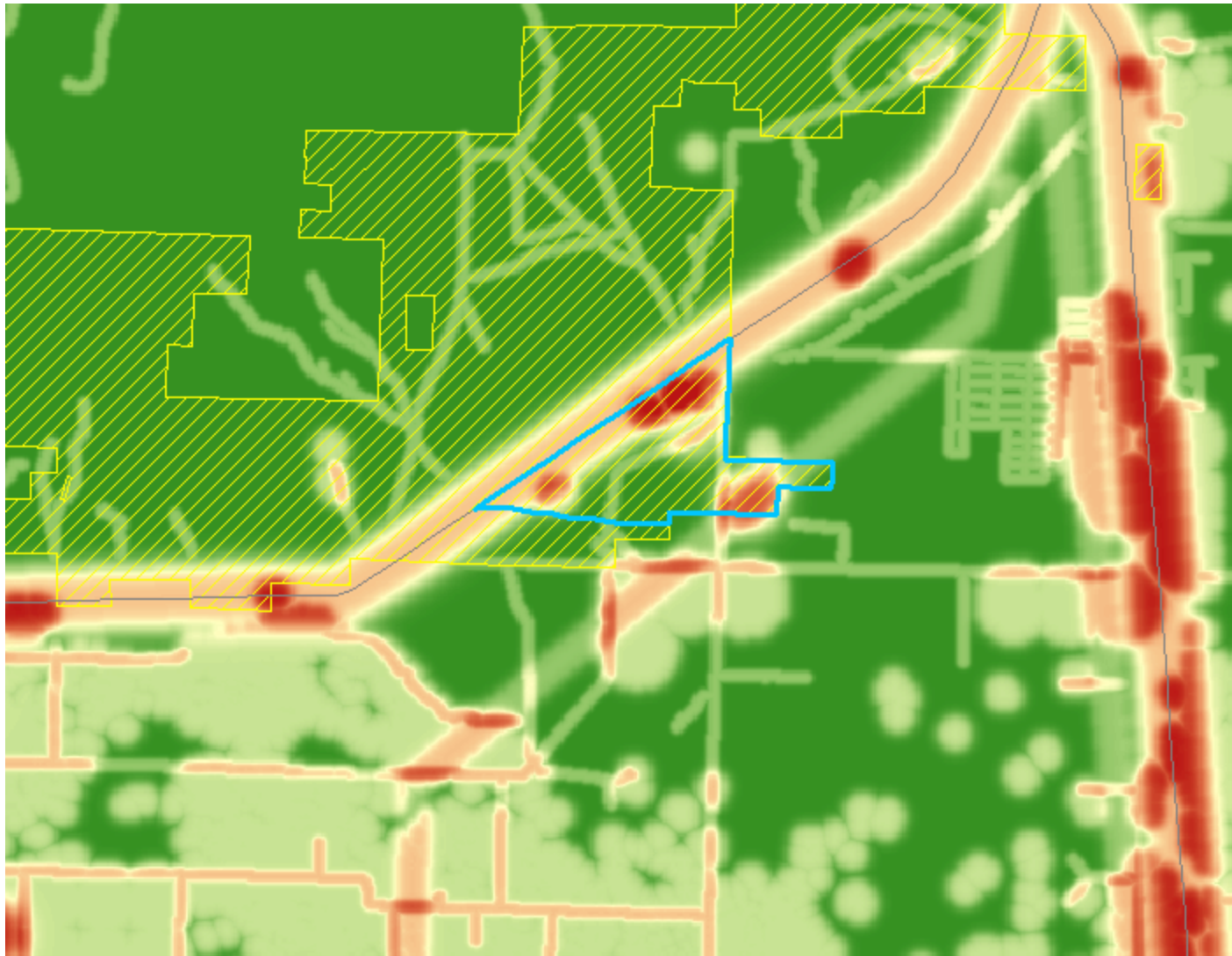


Less intact

TNC developed this map for all of Colorado. Only the San Luis Valley is shown here. Inputs include:

- Agriculture
- Urban development
- O&G development
- Surface mining
- Roads (primary and secondary, local and primitive)

F(2). Landscape intactness: DeTilla Gulch

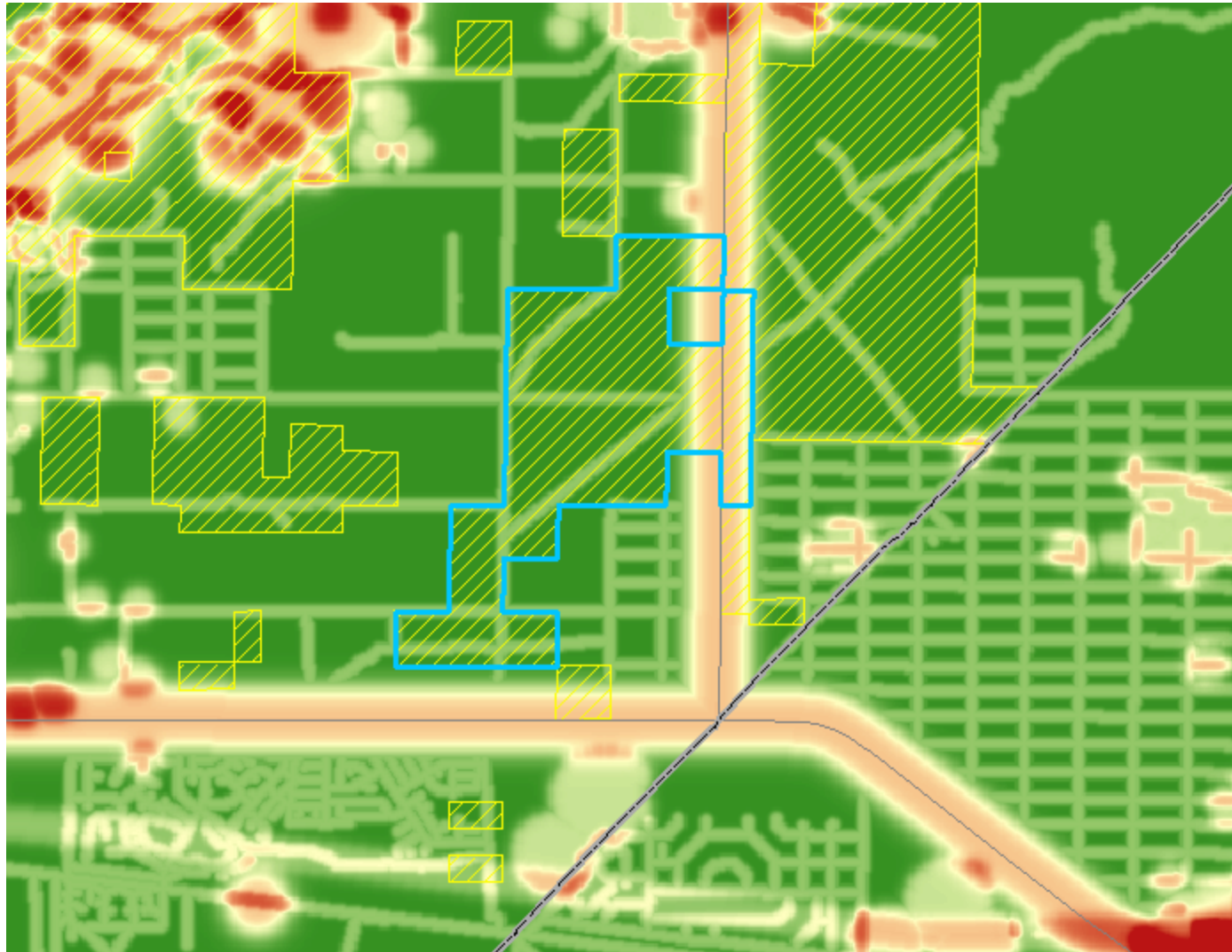


More intact



Less intact

F(3). Landscape Intactness: Fourmile East

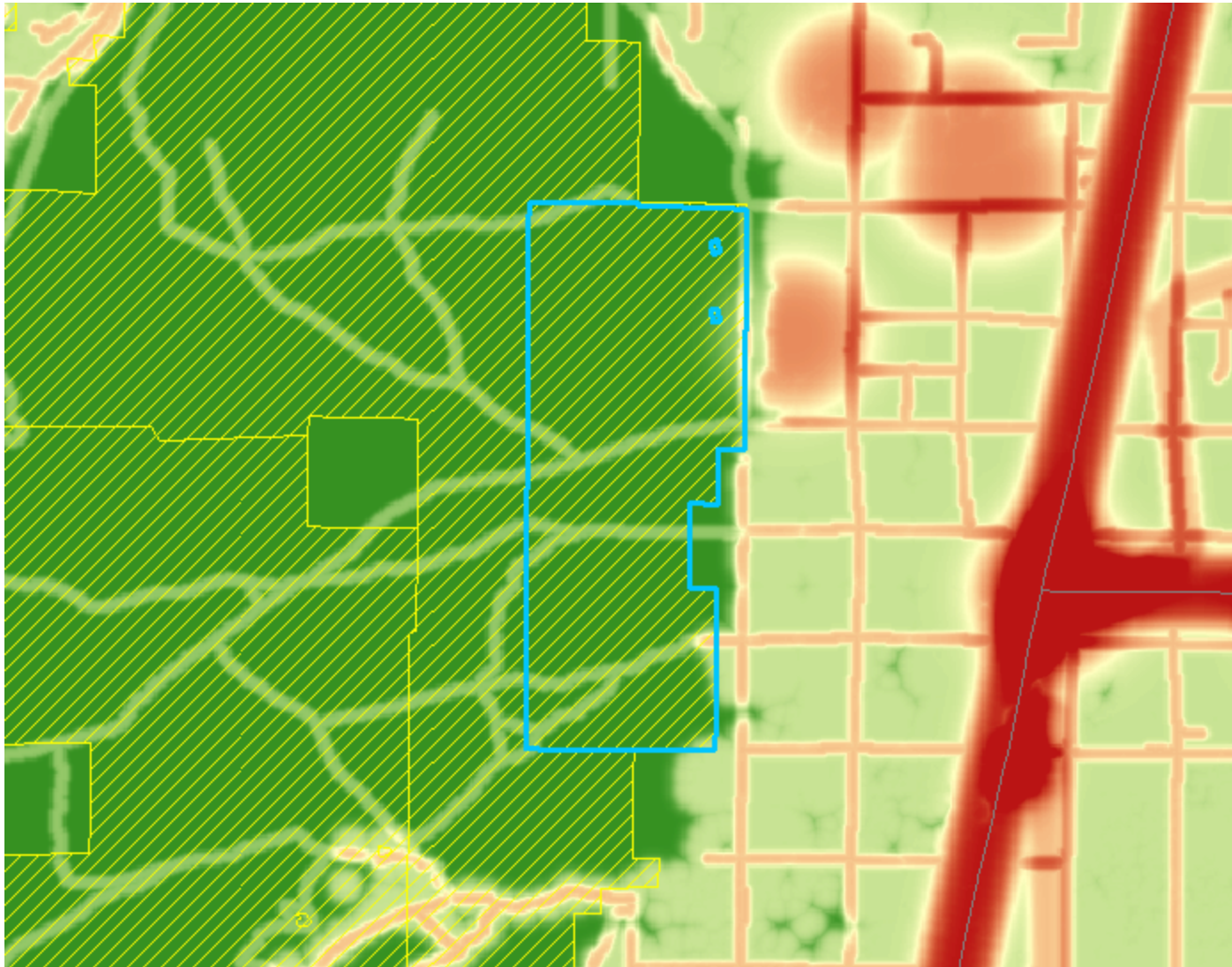


More intact



Less intact

F(4). Landscape Intactness: Los Mogotes East

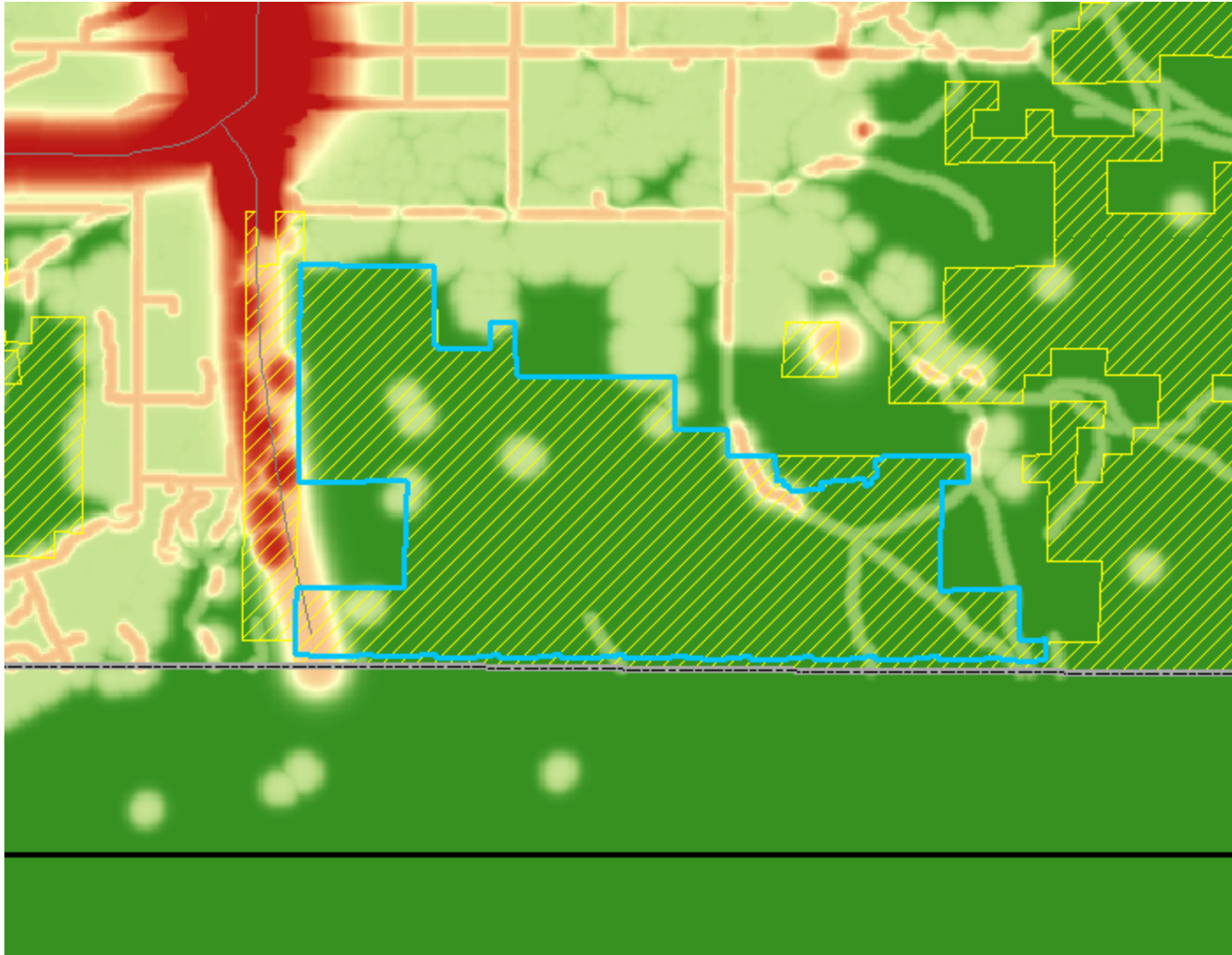


More intact



Less intact

F(5). Landscape Intactness: Antonito Southeast



More intact



Less intact