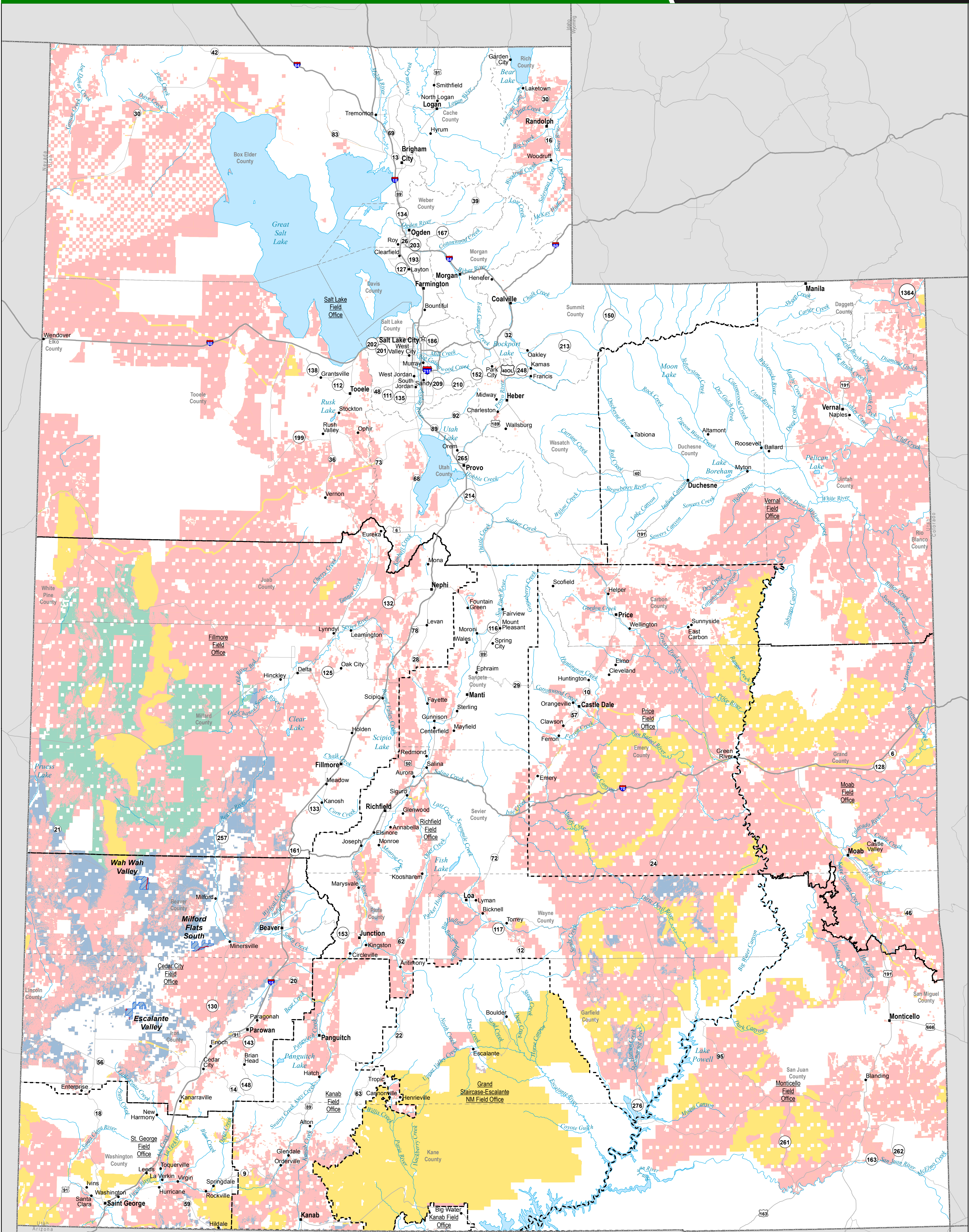


BLM-Administered Lands in Utah Available for Application for Solar Energy ROW Authorizations under the BLM Alternatives Considered in the Final Solar PEIS

Map Prepared July 2012



Property of the U.S. Departments of Energy and the Interior for use in preparation of their Final Programmatic Environmental Impact Statement for Solar Energy Development in Six Southwestern States



County Boundary
 BLM Administrative Division
 BLM-Administered Lands not Available for Solar Development Under All Alternatives
 Lands Proposed for Exclusion Under the Program Alternative (16,288,481 Acres)
 Lands Available for Application Through the Variance Process Under the Program Alternative (1,809,759 Acres)
 Lands Available for Application Affected by UTTR (See Note)
Solar Energy Zone (18,658 Acres)
 Developable Areas within SEZs
 Non-Development Areas within SEZs



8041220